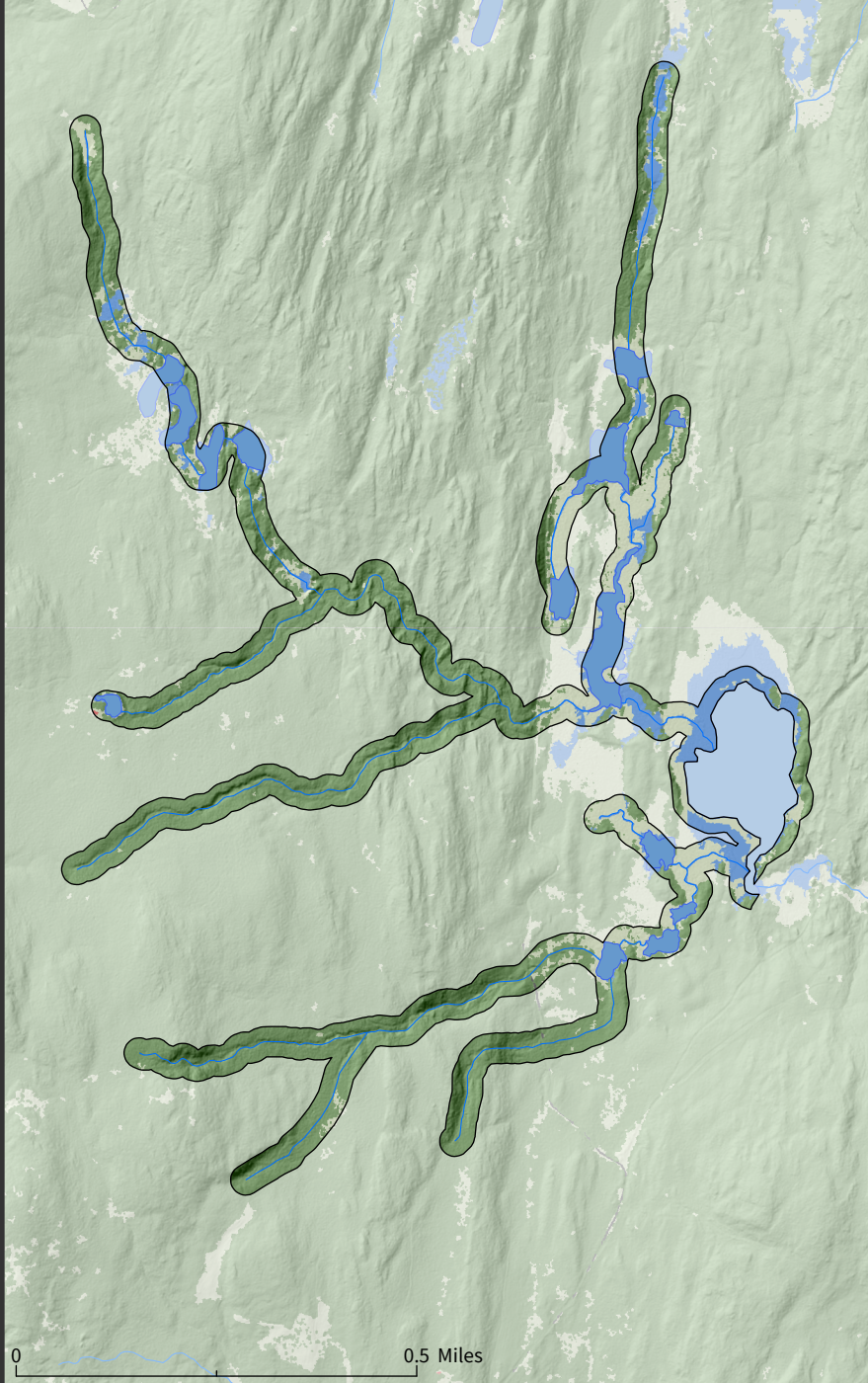


Schofield

Waterbody + Tributary 100ft Buffer

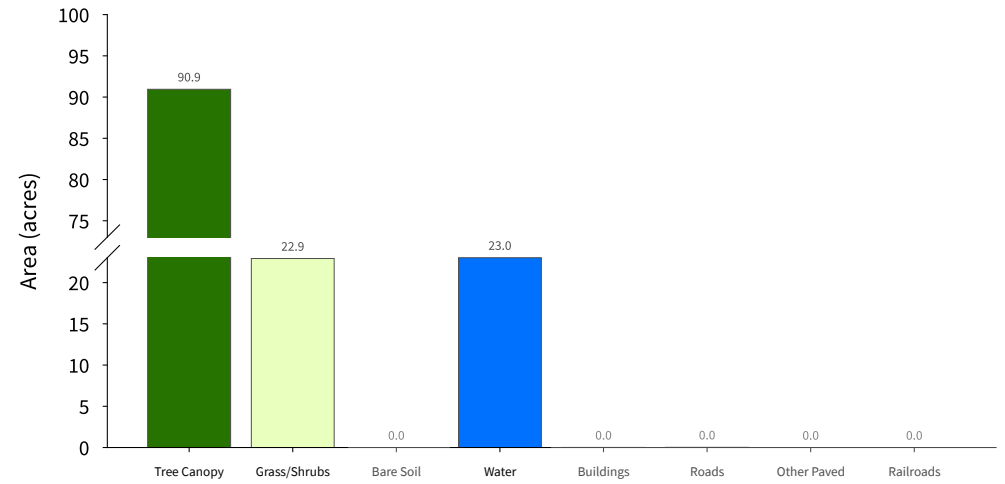
137 acres
(Base Land Cover Shown)



External Data Sources: UWM SAL High-Resolution (0.5m) Land Cover Dataset, VCGI Vermont State LIDAR, National Hydrography Dataset

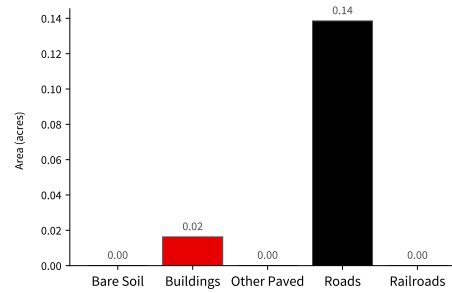
High-Resolution Land Cover Summary

Base Land Cover (Top-Down*)



Supplemental Land Cover

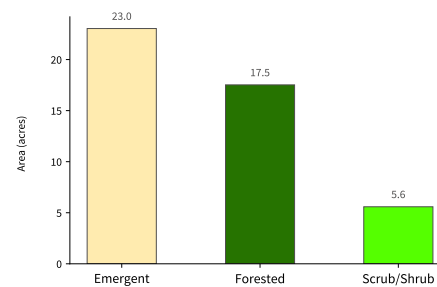
Impervious Surfaces (0.15 acres - 0.1 % of total) (Bottom-Up**)



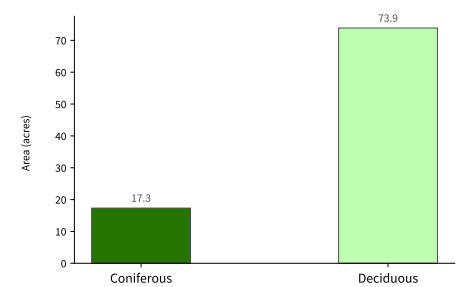
Agriculture (0 acres - 0 % of total)

No Agricultural Land Cover Mapped in this Area

Wetlands (46.14 acres - 33.7 % of total)



Tree Canopy (91.22 acres - 66.6 % of total)



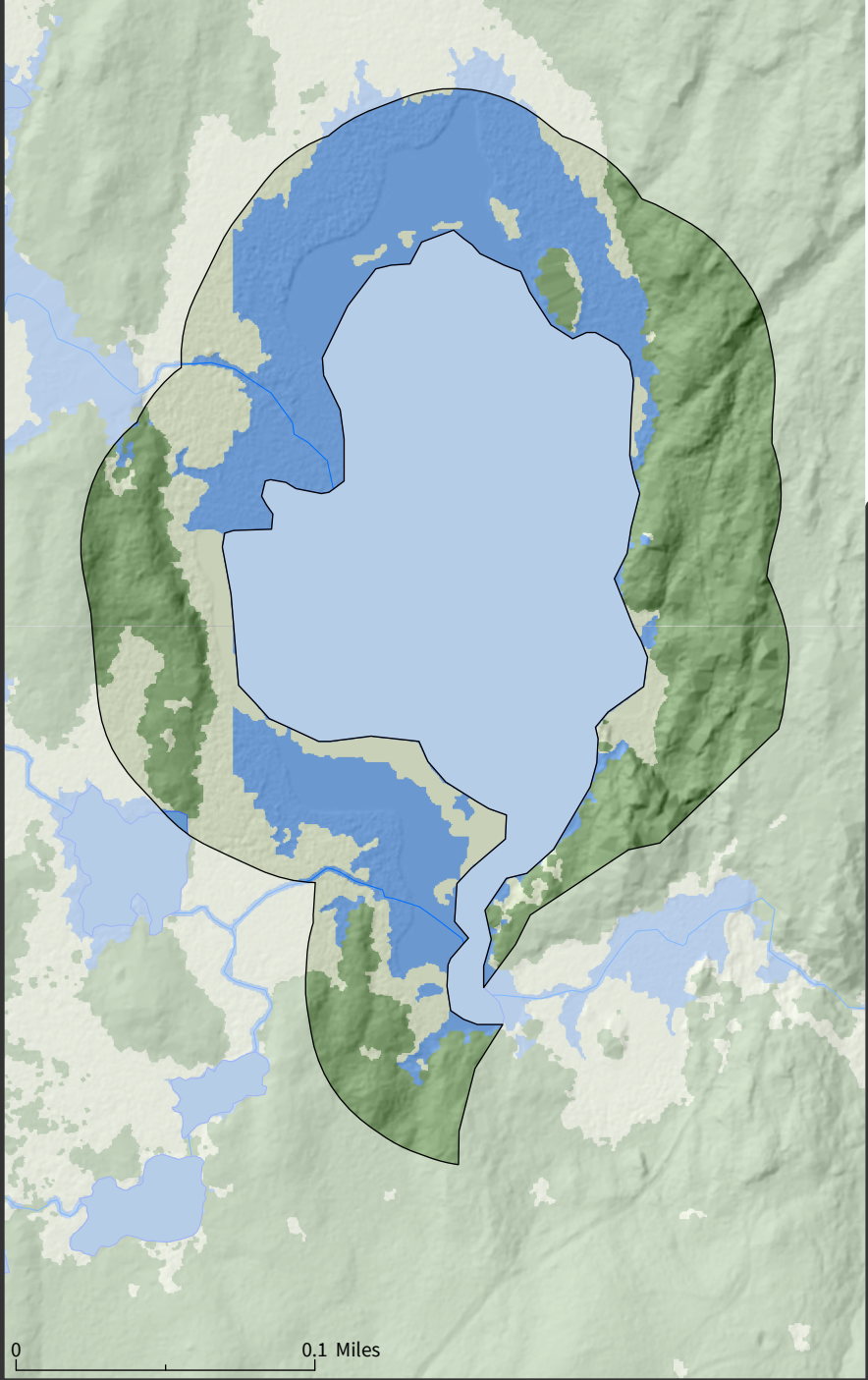
*Top-Down: A traditional land cover mapping approach - land cover is mapped as the uppermost land cover class.

**Bottom-Up: A new land cover mapping approach - land cover is mapped as the lowermost land cover class. This approach results in improved mapping of features overlapped/observed by other features. See UWM SAL High-Resolution Land Cover 2015 Report for more detail.

Schofield

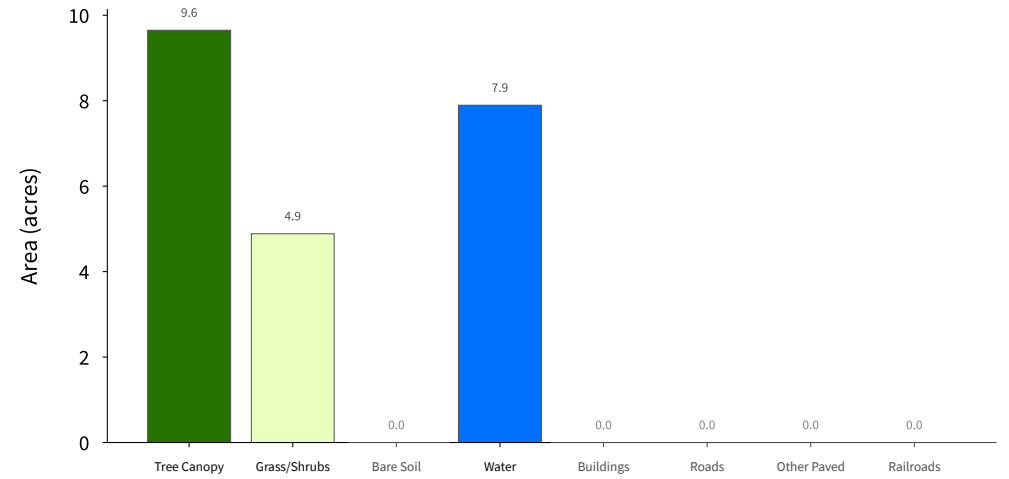
Waterbody 250ft Buffer

22 acres
(Base Land Cover Shown)



High-Resolution Land Cover Summary

Base Land Cover (Top-Down*)



Supplemental Land Cover

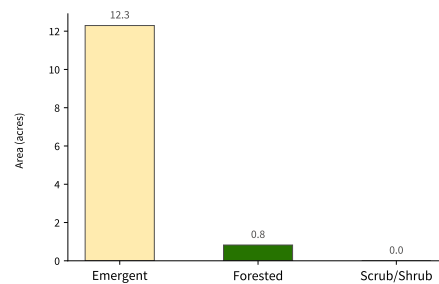
Impervious Surfaces (0 acres - 0% of total)
(Bottom-Up**)

No Impervious Land Cover Mapped in this Area

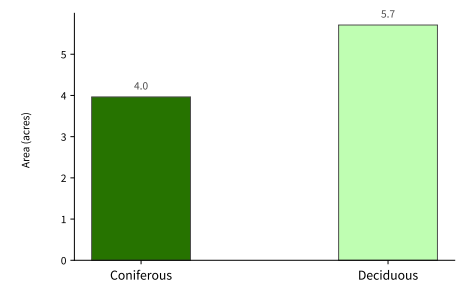
Agriculture (0 acres - 0% of total)

No Agricultural Land Cover Mapped in this Area

Wetlands (13.12 acres - 59.6% of total)



Tree Canopy (9.67 acres - 44% of total)



*Top-Down: A traditional land cover mapping approach - land cover is mapped as the uppermost land cover class.
**Bottom-Up: A new land cover mapping approach - land cover is mapped as the lowermost land cover class. This approach results in improved mapping of features overlapped/obscured by other features.
See UWM SAL High-Resolution Land Cover 2015 Report for more detail.

Schofield

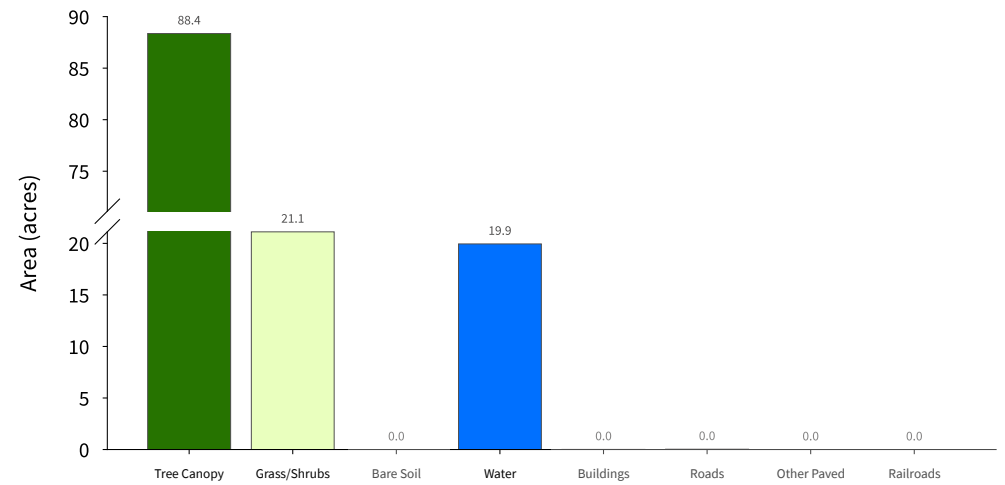
Tributary 100ft Buffer

129 acres
(Base Land Cover Shown)



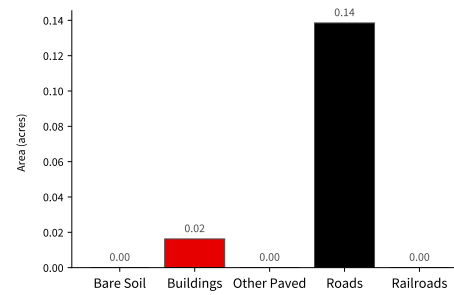
High-Resolution Land Cover Summary

Base Land Cover (Top-Down*)



Supplemental Land Cover

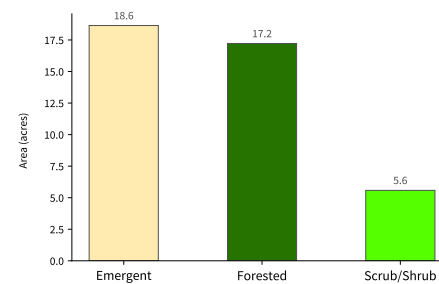
Impervious Surfaces (0.15 acres - 0.1% of total) (Bottom-Up**)



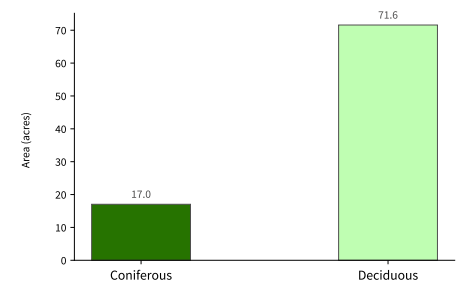
Agriculture (0 acres - 0% of total)

No Agricultural Land Cover Mapped in this Area

Wetlands (41.44 acres - 32.1% of total)



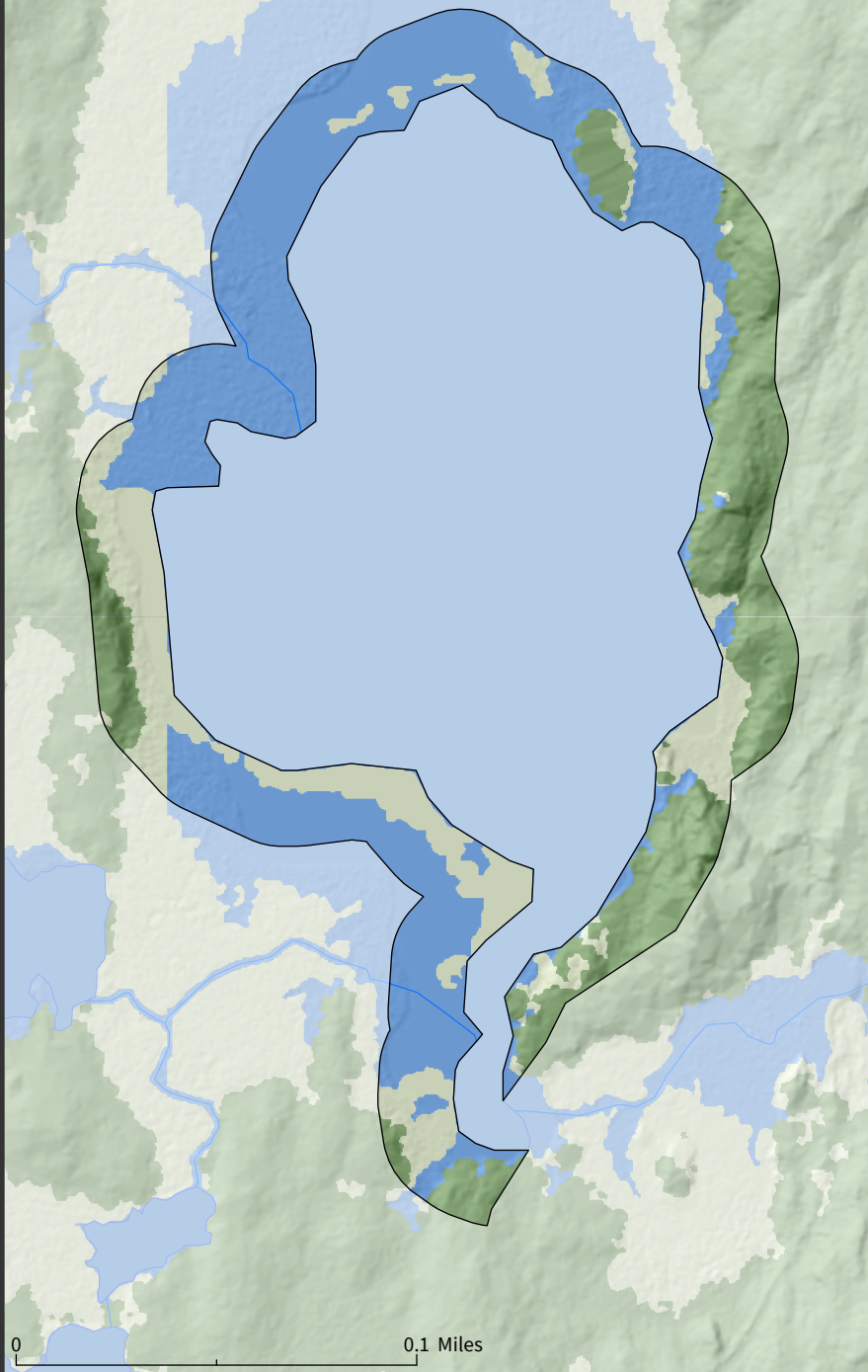
Tree Canopy (88.62 acres - 68.7% of total)



Schofield

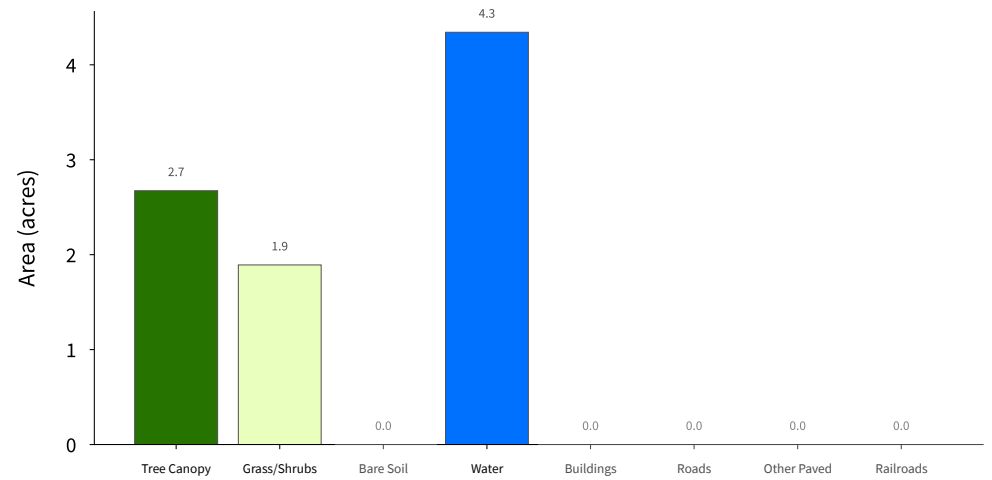
Waterbody 100ft Buffer

9 acres
(Base Land Cover Shown)



High-Resolution Land Cover Summary

Base Land Cover (Top-Down*)



Supplemental Land Cover

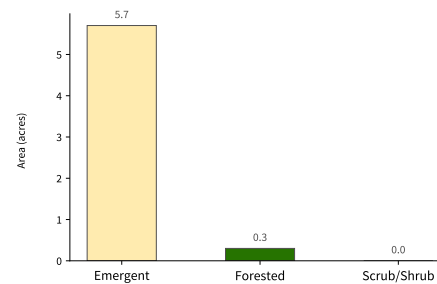
Impervious Surfaces (0 acres - 0% of total)
(Bottom-Up**)

No Impervious Land Cover Mapped in this Area

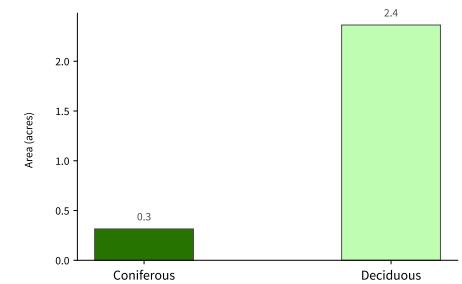
Agriculture (0 acres - 0% of total)

No Agricultural Land Cover Mapped in this Area

Wetlands (6 acres - 66.7% of total)



Tree Canopy (2.68 acres - 29.8% of total)

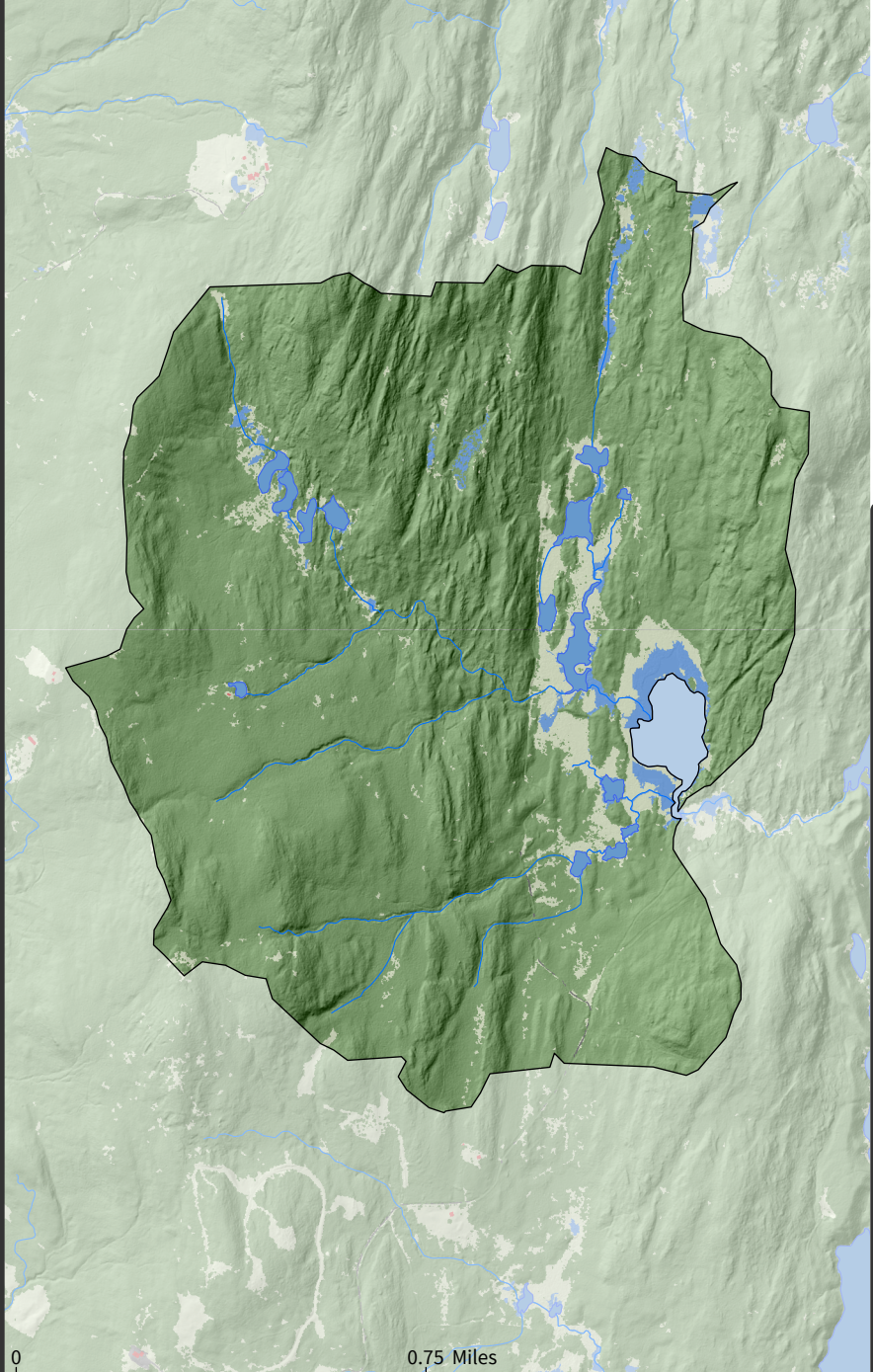


External Data Sources: UWM SAL High-Resolution (0.5m) Land Cover Dataset, VCGI Vermont State LIDAR, National Hydrography Dataset

*Top-Down: A traditional land cover mapping approach - land cover is mapped as the uppermost land cover class.
**Bottom-Up: A new land cover mapping approach - land cover is mapped as the lowermost land cover class. This approach results in improved mapping of features overlapped/obscured by other features.
See UWM SAL High-Resolution Land Cover 2015 Report for more detail.

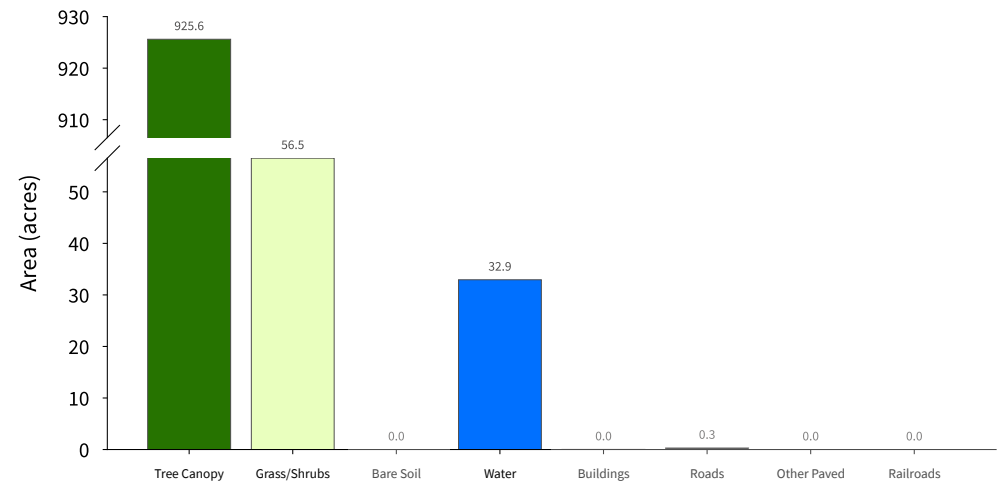
Schofield

Watershed
1,015 acres
(Base Land Cover Shown)



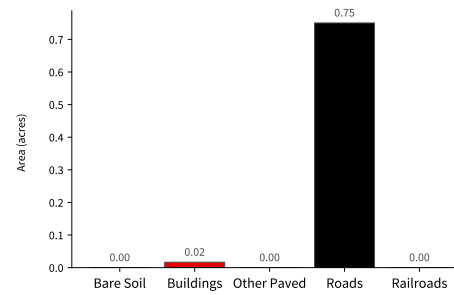
High-Resolution Land Cover Summary

Base Land Cover (Top-Down*)



Supplemental Land Cover

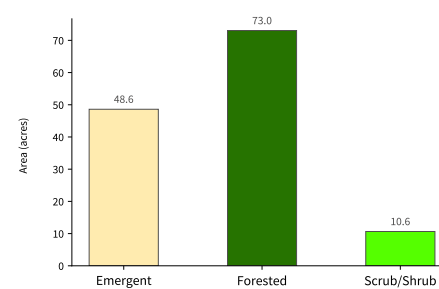
Impervious Surfaces (0.77 acres - 0.1% of total) (Bottom-Up**)



Agriculture (0 acres - 0% of total)

No Agricultural Land Cover Mapped in this Area

Wetlands (132.31 acres - 13% of total)



Tree Canopy (926.64 acres - 91.3% of total)

