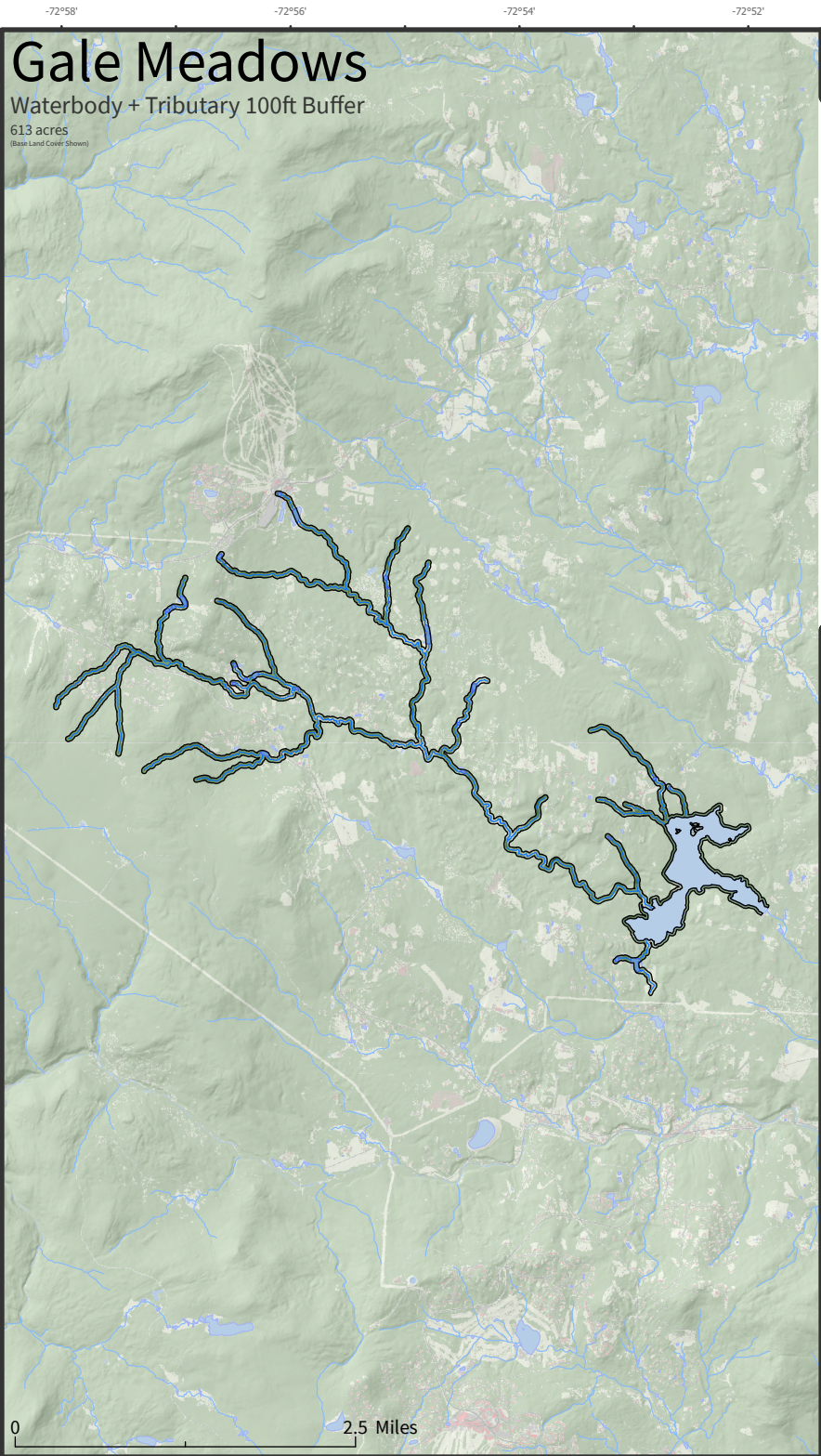


Gale Meadows

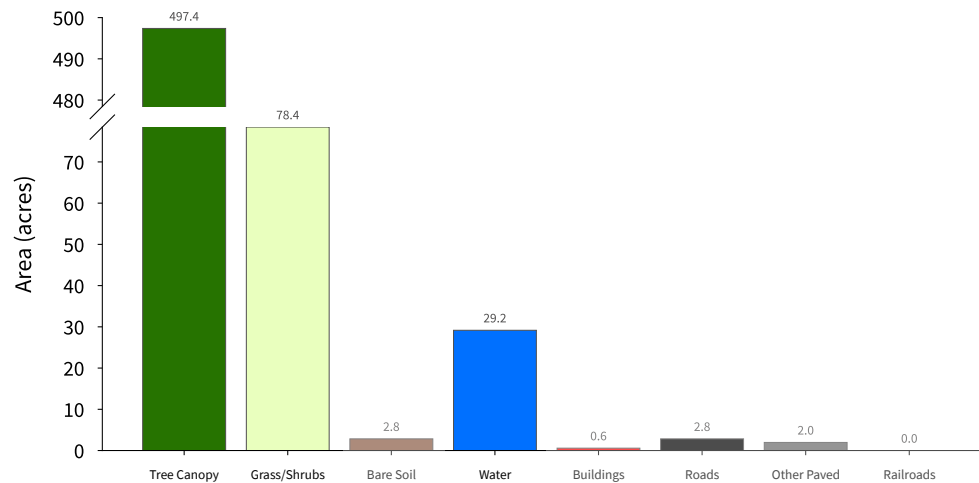
Waterbody + Tributary 100ft Buffer

613 acres
(Base Land Cover Shown)



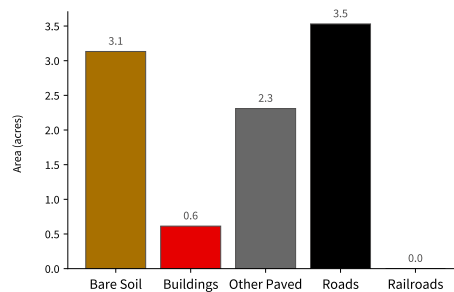
High-Resolution Land Cover Summary

Base Land Cover (Top-Down*)

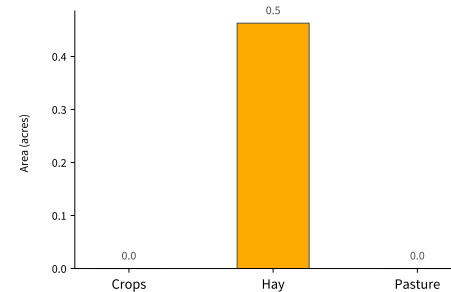


Supplemental Land Cover

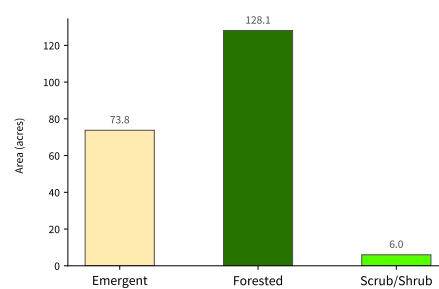
Impervious Surfaces (9.59 acres - 1.6% of total) (Bottom-Up**)



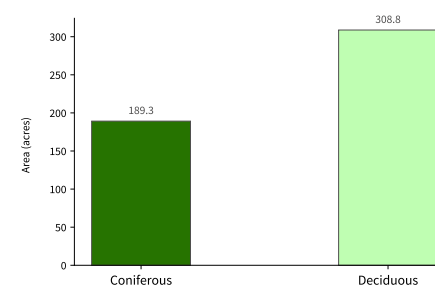
Agriculture (0.46 acres - 0.1% of total)



Wetlands (207.85 acres - 33.9% of total)

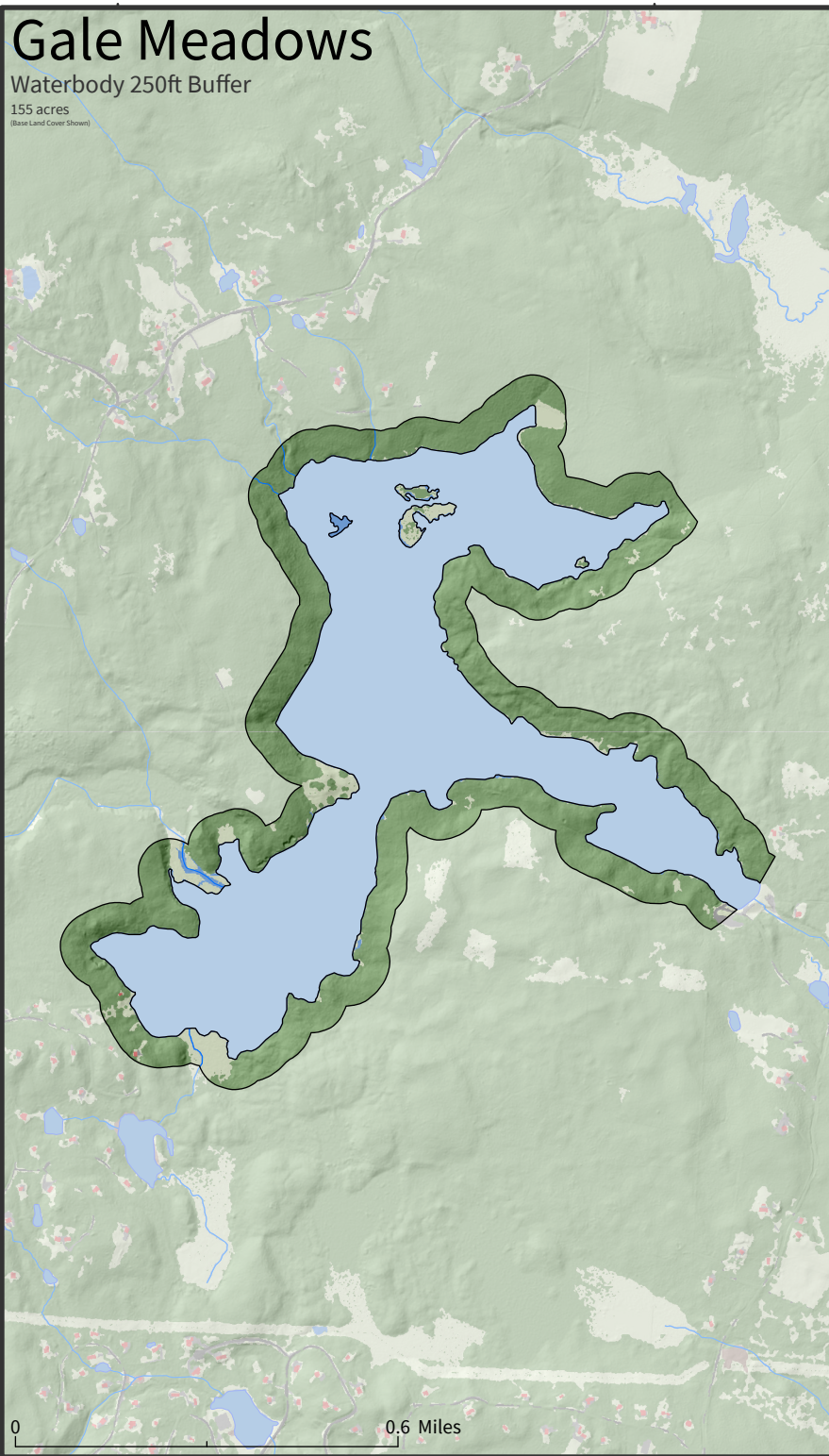


Tree Canopy (498.01 acres - 81.2% of total)



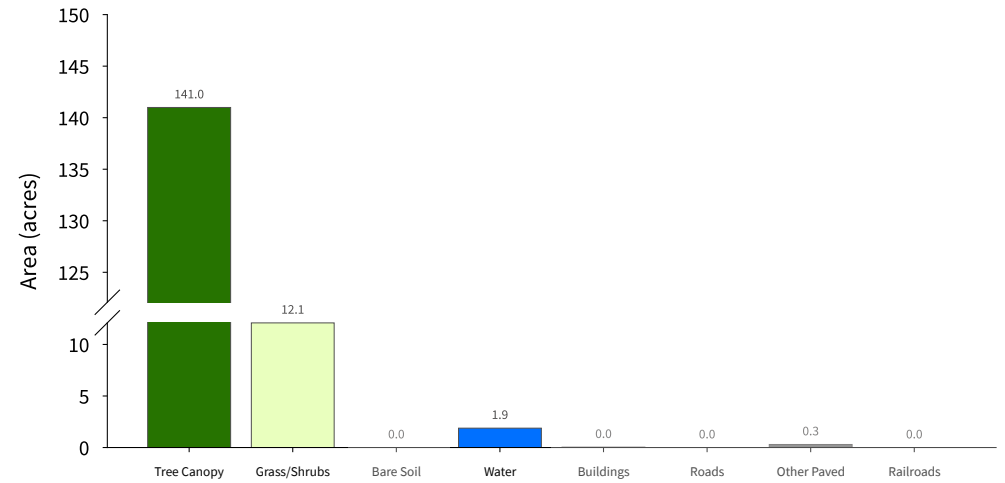
Gale Meadows

Waterbody 250ft Buffer
155 acres
(Base Land Cover Shown)



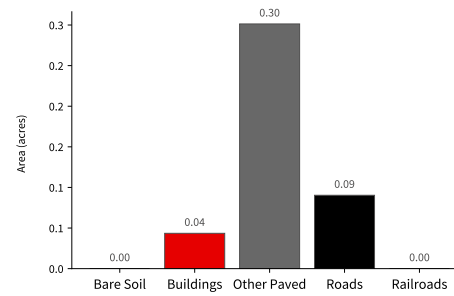
High-Resolution Land Cover Summary

Base Land Cover (Top-Down*)

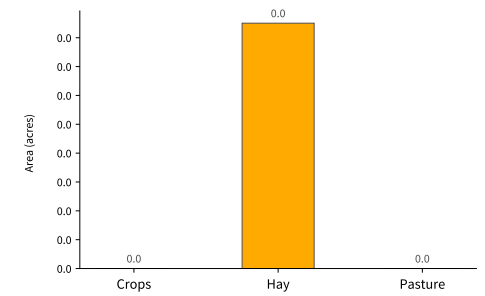


Supplemental Land Cover

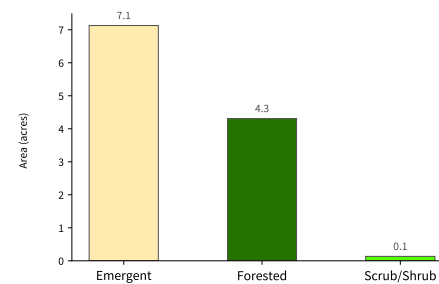
Impervious Surfaces (0.44 acres - 0.3% of total) (Bottom-Up**)



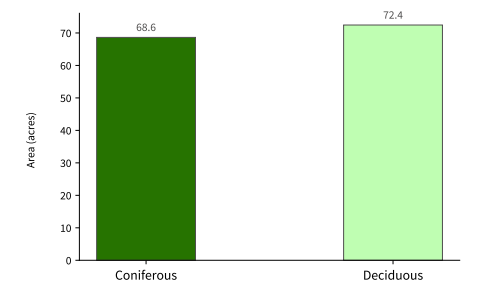
Agriculture (0 acres - 0% of total)



Wetlands (11.57 acres - 7.5% of total)



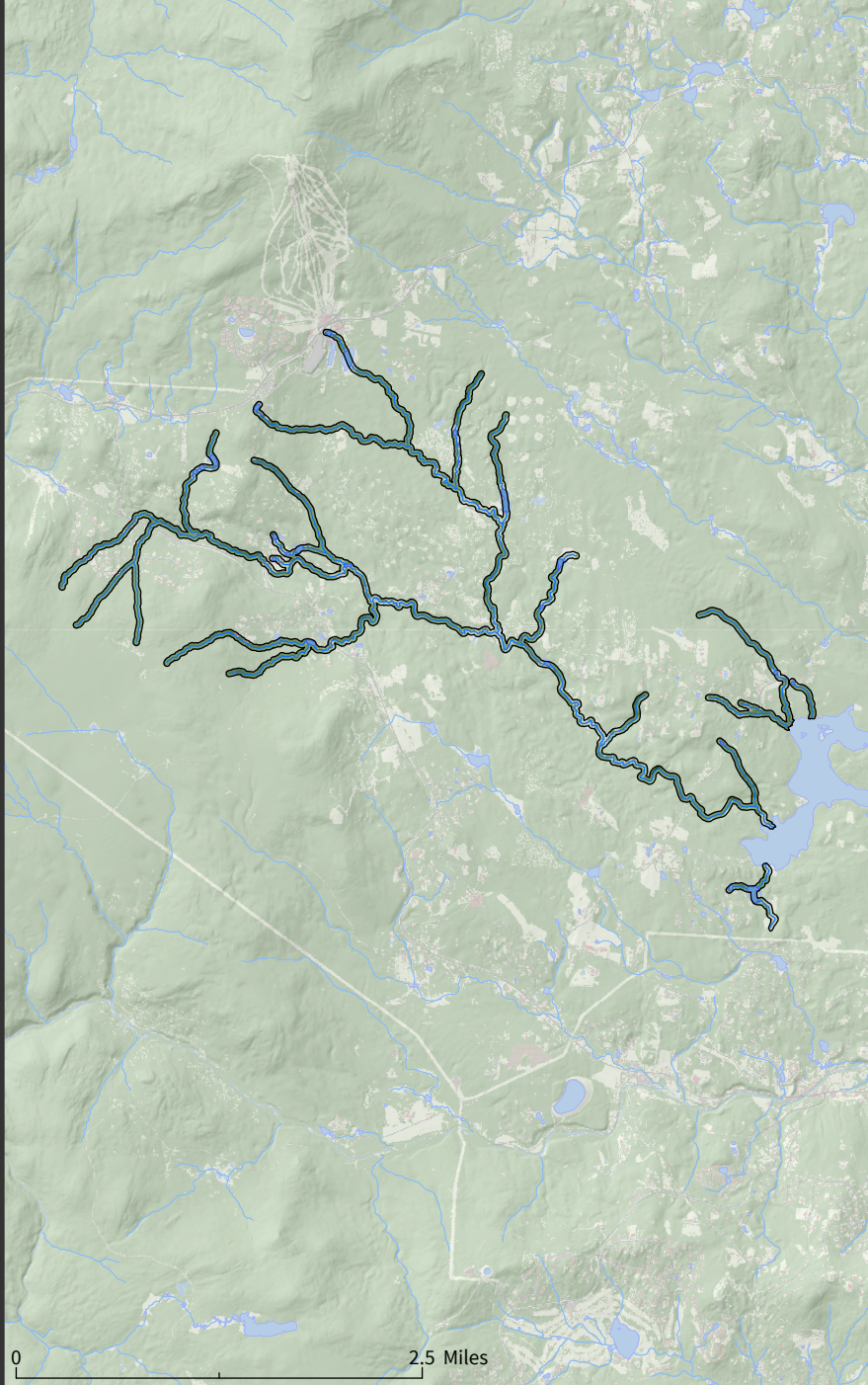
Tree Canopy (141.09 acres - 91% of total)



Gale Meadows

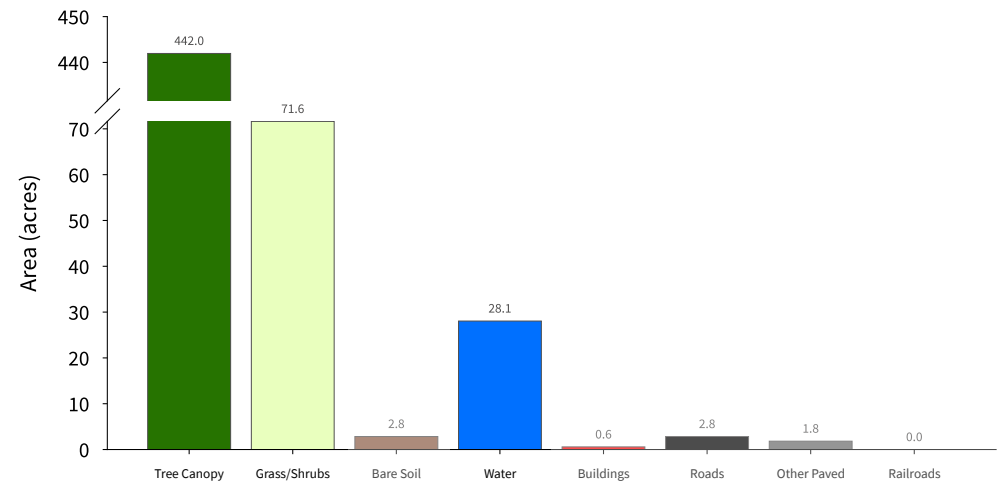
Tributary 100ft Buffer

550 acres
(Base Land Cover Shown)



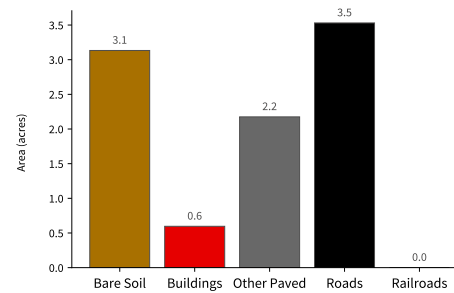
High-Resolution Land Cover Summary

Base Land Cover (Top-Down*)

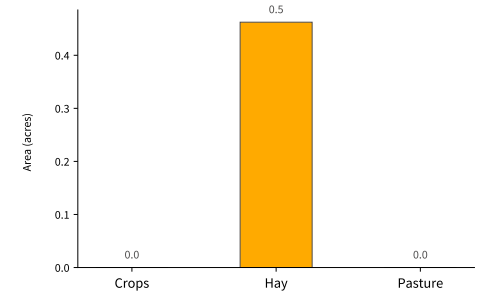


Supplemental Land Cover

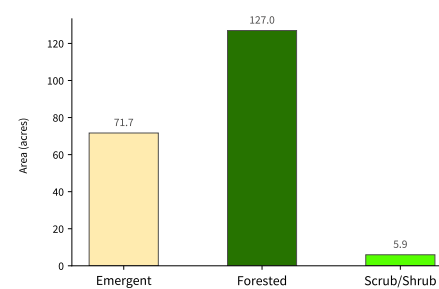
Impervious Surfaces (9.43 acres - 1.7% of total) (Bottom-Up**)



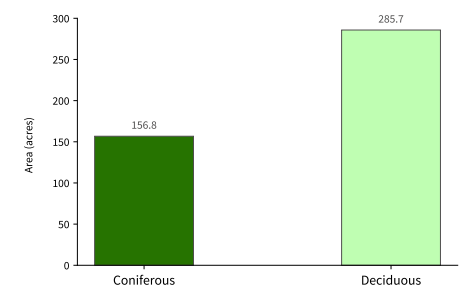
Agriculture (0.46 acres - 0.1% of total)



Wetlands (204.55 acres - 37.2% of total)



Tree Canopy (442.55 acres - 80.5% of total)



Gale Meadows

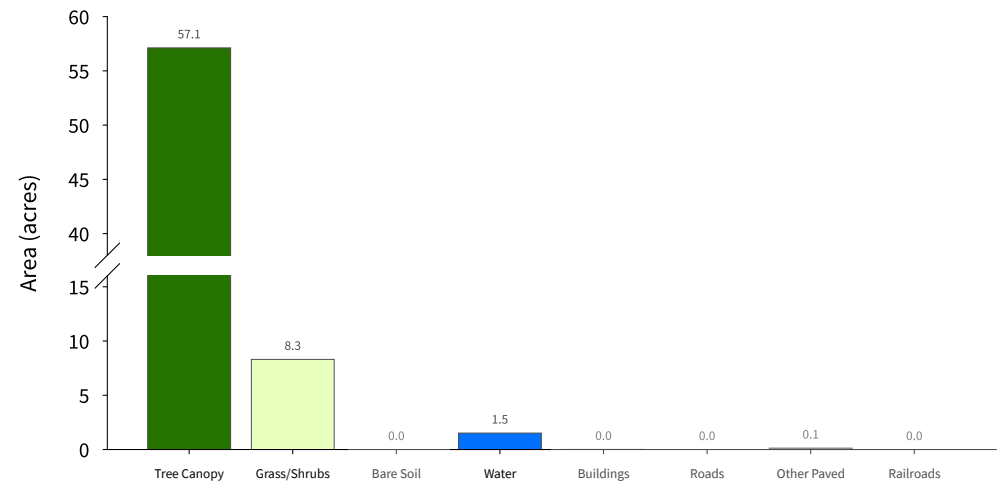
Waterbody 100ft Buffer

67 acres
(Base Land Cover Shown)



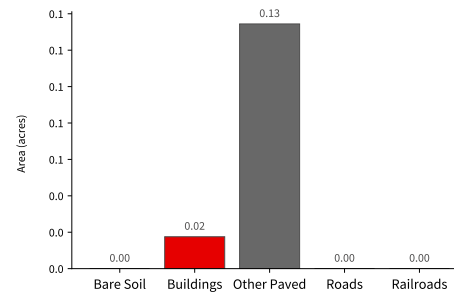
High-Resolution Land Cover Summary

Base Land Cover (Top-Down*)

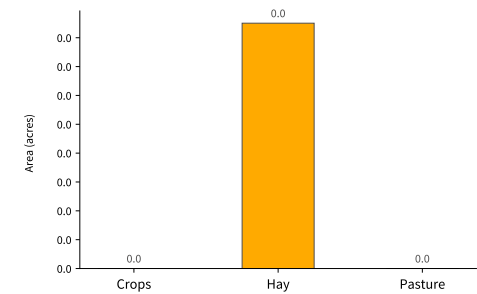


Supplemental Land Cover

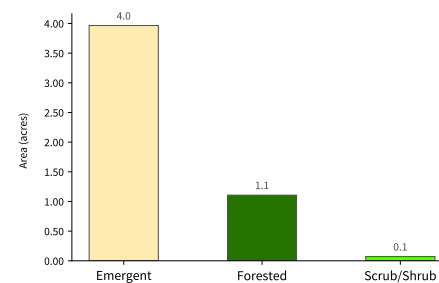
Impervious Surfaces (0.15 acres - 0.2% of total) (Bottom-Up**)



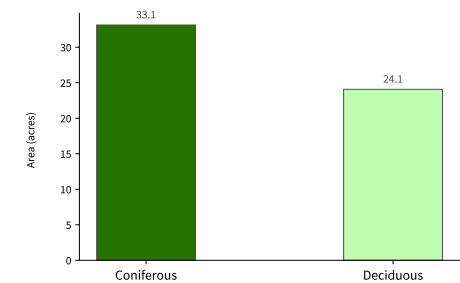
Agriculture (0 acres - 0% of total)



Wetlands (5.14 acres - 7.7% of total)

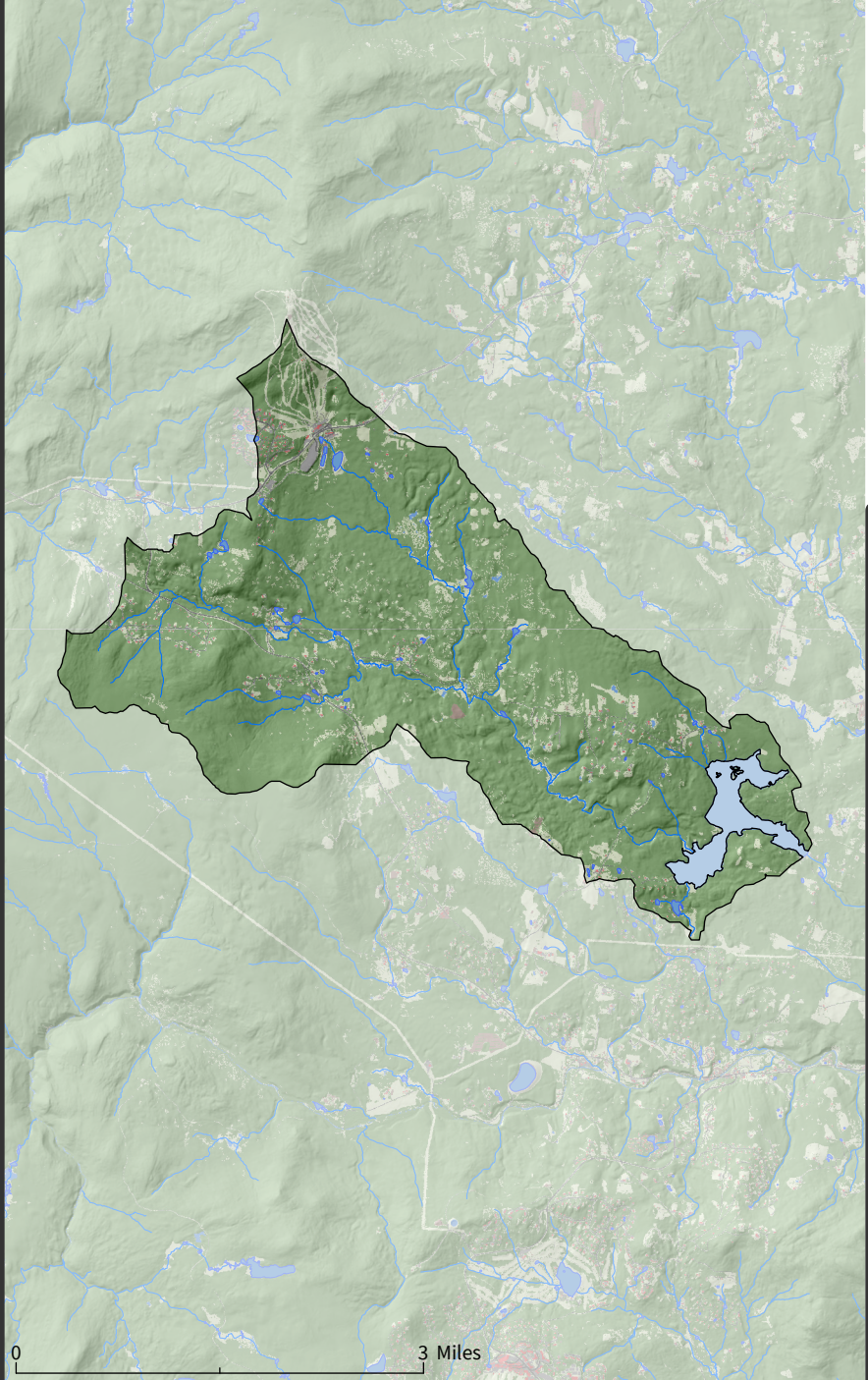


Tree Canopy (57.2 acres - 85.4% of total)



Gale Meadows Watershed

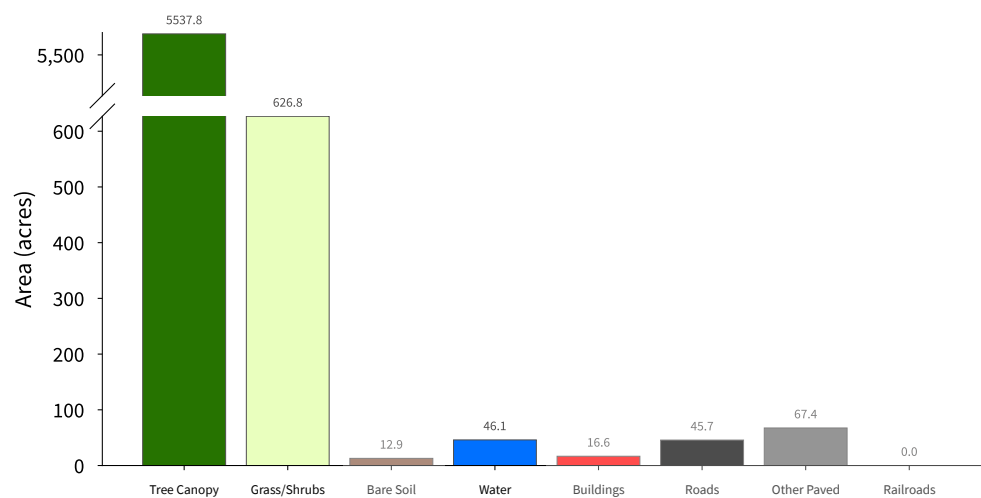
6,353 acres
(Base Land Cover Shown)



External Data Sources: UWM SAL High-Resolution (0.5m) Land Cover Dataset, VCGI Vermont State LIDAR, National Hydrography Dataset

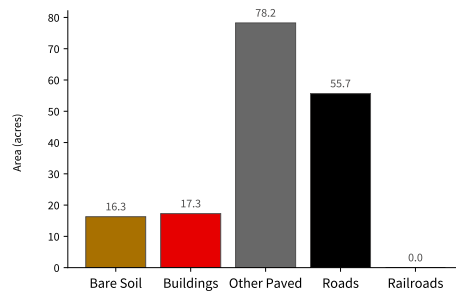
High-Resolution Land Cover Summary

Base Land Cover (Top-Down*)

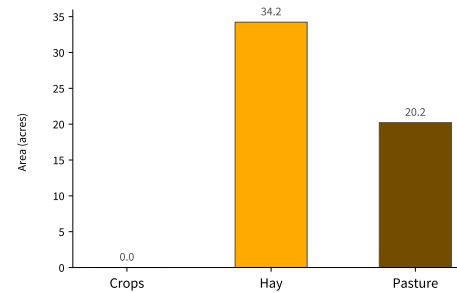


Supplemental Land Cover

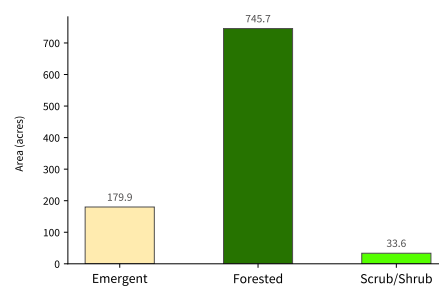
Impervious Surfaces (167.47 acres - 2.6% of total) (Bottom-Up**)



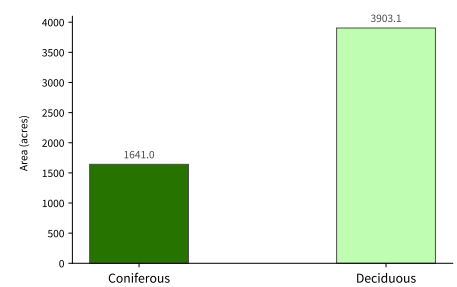
Agriculture (54.43 acres - 0.9% of total)



Wetlands (959.17 acres - 15.1% of total)



Tree Canopy (5,544.11 acres - 87.3% of total)



*Top-Down: A traditional land cover mapping approach - land cover is mapped as the uppermost land cover class.
 **Bottom-Up: A new land cover mapping approach - land cover is mapped as the lowermost land cover class. This approach results in improved mapping of features overlapped/obscured by other features.
 See UWM SAL High-Resolution Land Cover 2015 Report for more detail.