

Robbins Mountain Wildlife Management Area

Last edited: 9/30/22



General Description

Robbins Mountain Wildlife Management Area (WMA) is located in west central Vermont in the towns of Bolton and Richmond. It consists of 898 acres of forested mountainside. It is owned by the State of Vermont and managed by the Vermont Fish & Wildlife Department. Access is either from a small parking area on Gillett Pond

Road, or through the Chittenden County Fish and Game Club nearby. Wood roads provide foot access into the heart of the WMA. The property is adjacent to the much larger Camel's Hump State Forest, thereby providing an opportunity for fine backcountry experiences.

History

In the 1800's Bolton was known as the "land of boulders and bears" because of its lack of tillable land. Robbins Mountain is named after the unlucky settler who was granted this piece of mountainous terrain. Although parts of the WMA were probably once used to pasture sheep during the 1800's, very little agricultural history has been recorded, and Robbins Mountain has been forested for some time.

The State first acquired land for the WMA in 1967 from M. and L. Cullen. More purchases were made in 1968. Funding was provided by Pittman-Robertson Federal monies (generated from the sale of firearms and ammunition), Department funds (generated from the sale of hunting and fishing licenses) and funds from the adjacent Chittenden County Fish and Game Club.

Habitat Features

In the 1800's Bolton was known as the "land of boulders and bears" because of its lack of tillable land. Robbins Mountain is named after the unlucky settler who was granted this piece of mountainous terrain. Although parts of the WMA were probably once used to pasture sheep during the 1800's, very little agricultural history has been recorded, and Robbins Mountain has been forested for some time.

The State first acquired land for the WMA in 1967 from M. and L. Cullen. More purchases were made in 1968. Funding was provided by Pittman-Robertson Federal monies (generated from the sale of firearms and ammunition), Department funds (generated from the sale of hunting and fishing licenses) and funds from the adjacent Chittenden County Fish and Game Club.

Common Fish and Wildlife

Mammals Robbins Mountain is a good big game hunting venue. White-tailed deer, black bear and moose frequent the WMA and adjacent Camel's Hump State Forest. Other mammals present are coyote, bobcat, red fox, fisher, snowshoe hare, raccoon and a variety of smaller mammals

Birds Wild turkey, ruffed grouse and woodcock live on the WMA and may be hunted in season. Songbird species include eastern wood pewee, white-and red-breasted nuthatches, black-capped chickadee, blue jay, red-eyed vireo, ovenbird, black-throated blue warbler, hermit and wood thrushes, and scarlet tanager. Forest dwelling raptors such as barred owls and Cooper's and sharp-shinned hawks may be encountered.

Reptiles and Amphibians Look for northern dusky, northern two-lined, spotted and red-backed salamanders and newts, wood frogs and American toads. One may also find milk, brown, garter and possibly red-bellied snakes.

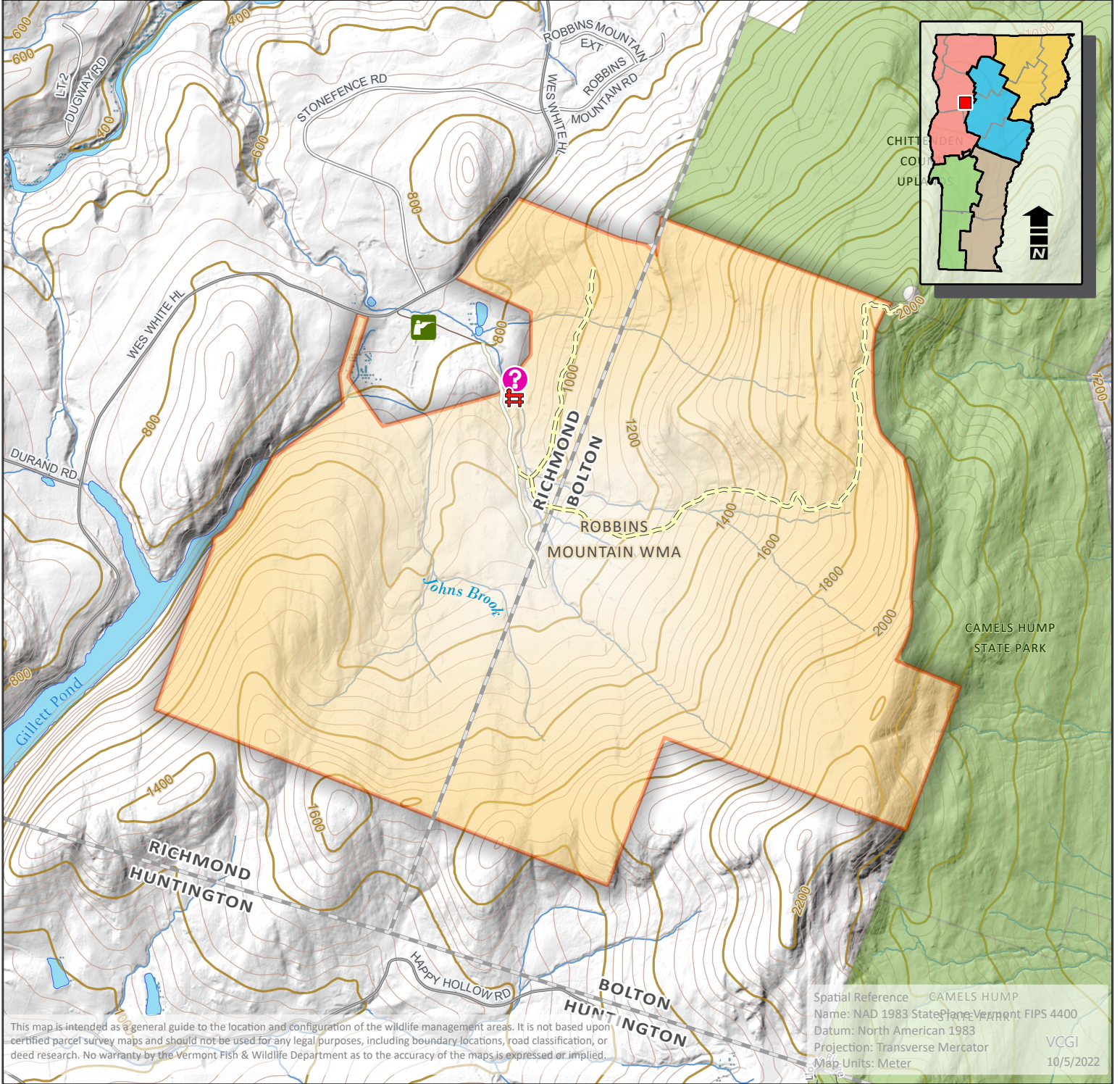
Fish The two small streams on the property contain some small brook trout.



An early successional cut on Robbins Mountain creates browse for wildlife.
Wayne Laroche, VFWD photo.



Robbins Mountain Wildlife Management Area



| Robbins Mountain WMA | | | | Map Number: 53 | | | |
|----------------------|-----------------------|---------------------|--------------------------|---------------------------------------|--------------|--|--|
| Parking | Shooting Range | Fishing Access | Trails | Refuge (no public access) | Federal Land | | |
| Boat Ramp | Wildlife Viewing Area | Visitor Information | Town Boundary | Special hunting/trapping restrictions | State Land | | |
| Cartop Access | Campground | Gate | Wildlife Management Area | Streambank Management Area | Town Land | | |
| Park Office | Vista | Rail Lines | WMA Hunting Rights Only | Controlled Hunting Area | | | |