

Lower Lamoille Wildlife Management Area

Last edited: 9/30/22



General Description

Lower Lamoille River Wildlife Management Area (WMA) is located in northwest Vermont in the town of Milton. Its 234 acres are within an extensive wetland that includes an oxbow of the river. Access is primarily by boat along the river. There is also an unmarked town-owned right-of way off Pine Harbor Rd. The WMA is owned by the State of Vermont and managed by the Vermont Fish & Wildlife Department.

History

The Lamoille River was an important travel corridor for Native Americans. They hunted here and fished for pike. The name "Lamoille" may be a misspelling of the name Samuel de Champlain supposedly gave the river. It is said he named it "La Mouette" because of the many gulls he saw at its mouth. Another possibility is that it is named "La Moelle," meaning "marrow."

This is a relatively new WMA, acquired with the assistance of The Nature Conservancy in 1995. Vermont Duck Stamp monies were used in part. The State also received a grant from the North American Wetland Conservation Act and a private donation.



Water lilies float on the Lower Lamoille River oxbow.
Bill Crenshaw, VTFWD photo.

Habitat Features

Lower Lamoille River WMA is situated in an extensive wetland surrounding the Lamoille River near its mouth. There is a mix of emergent marsh wetlands, floodplain forest and an oxbow. The floodplain forest is composed mostly of silver and red maple and green ash. A few upland acres are regenerating old fields. Common plants include cattail, wild rice, and red and silver maple.

Common Fish and Wildlife

Mammals There are white-tailed deer on the upland portions of the WMA. Wetland dwelling mammals occurring here include beaver, otter, muskrat, mink, raccoon, and smaller mammals such as northern water shrew and star-nosed mole.

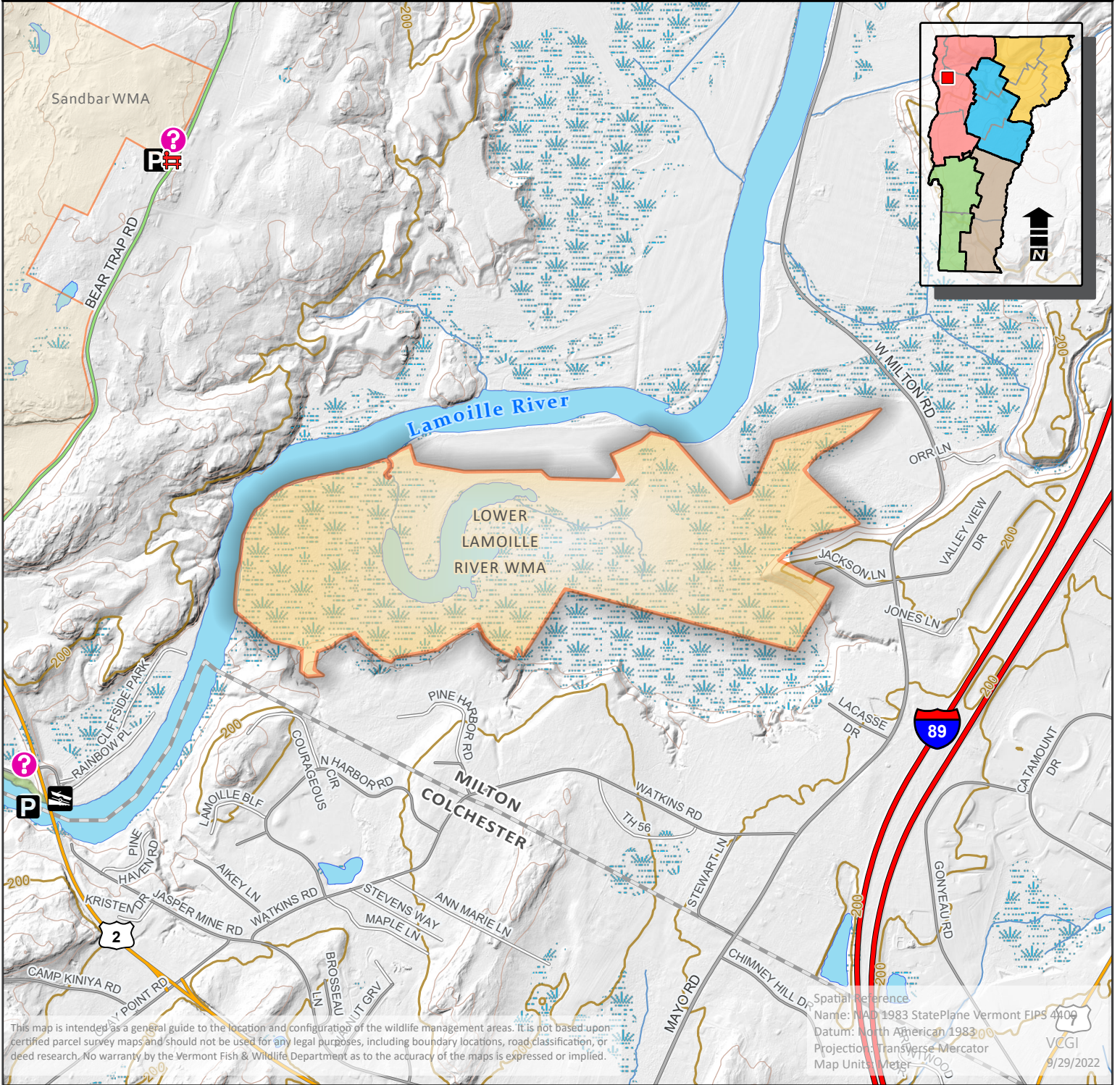
Birds Wetland and wetland edge birds may be found here. Waterfowl are common during breeding and migration, especially mallards and wood ducks. Marsh birds such as herons, rails, bitterns and marsh wrens may be seen or heard. Ruffed grouse, wild turkey and American woodcock are present on the uplands.

Reptiles and Amphibians Several herptiles may be found in the WMA including eastern newts, red-backed salamanders, mudpuppies, and northern leopard, green and bull frogs. Snapping, painted, and northern map turtles may be seen basking on logs. Northern water, milk, brown and garter snakes should all occur though they may not be seen.

Fish There is good fishing for northern pike, smallmouth bass and walleye in the Lamoille River nearby. The WMA itself has limited fishing.



Lower Lamoille River Wildlife Management Area



73°12'W

73°11'W

73°10'W

0 0.47 0.95 1.9 Miles

Lower Lamoille River WMA

Map Number: 46

Parking	Shooting Range	Fishing Access	Trails	Refuge (no public access)	Federal Land
Boat Ramp	Wildlife Viewing Area	Visitor Information	Town Boundary	Special hunting/trapping restrictions	State Land
Cartop Access	Campground	Gate	Wildlife Management Area	Streambank Management Area	Town Land
Park Office	Vista	Rail Lines	WMA Hunting Rights Only	Controlled Hunting Area	