

Intervale Wildlife Management Area

Last edited: 9/30/22



General Description

Spread over 487 acres in Burlington, the Intervale Wildlife Management Area (WMA) was created to mitigate the loss of wetlands due to construction of Route 127. The original land belongs to the Vermont Agency of Transportation, which bought it in 1987. To the south, the Cattail Marsh Unit consists of 122 acres of wetland. The more northern parcel is a portion of the former Howe Farm and is 75 acres of riparian upland and wetland. The VT Fish & Wildlife Department now owns nearly 300 acres along the Winooski River in the Town of Colchester, which was added to the WMA in 2021. The WMA is open to fishing and trapping. The City of Burlington has a firearm discharge ordinance that effectively prohibits hunting with firearms.

Access to the Howe Farm portion can be gained by paddling upstream from the Winooski River access on Heineburg Drive. Access to Cattail Marsh is by parking at the Ethan Allen Homestead and walking up the bike path.



An aerial view of the Burlington Intervale showing the varied nature of a wetland complex.
Bill Crenshaw, VTFWD photo.

History

The property is part of a large floodplain of the Winooski River, which has historically been both marsh and farmland. Some farming is still practiced on upland portions near Intervale Road. The last dairy farm in the Burlington city limits was in the Intervale.

The Ethan Allen Homestead and Museum is near the Howe parcel. It features Ethan Allen's last home and farm, and is dedicated to education about the history of the area.

Both the Howe Farm unit and the Cattail Marsh Unit of the WMA were part of mitigation to replace wetlands that were filled to construct the Northern Connector (Route 127). Habitat productivity and diversity was enhanced by the construction of a water control structure in 1985.

In 2021, two farm properties were added to Intervale, discontinuous from the existing parcels in the WMA. The Department partnered with the Vermont Agency of Agriculture, Food, & Markets, the Vermont Housing and Conservation Board and The Nature Conservancy to facilitate the retirement and subsequent purchase and restoration of the former Fitzgerald Farm property on the Winooski River in Colchester.

The 143-acre farm provides wildlife habitat and wildlife-based recreation such as hunting, fishing, birding, and paddling to Vermont's most populated urban center. Also acquired was the Senesac Farm, a 142-acre property, which is bounded on the north by Pine Island Road, on the south by the Winooski River, and on the west by the Fitzgerald Farm property.

Habitat Features

The Intervale WMA is part of a larger wetland complex in the floodplain of the Winooski River. The soils are fertile clays. There is a natural oxbow, stretches of open water, ditches and leads, deep bulrush marsh, and an extensive cattail marsh. There are small areas of open fields and brushy old fields.

Strumose sunflower, creeping love-grass, cursed crowfoot and small bidens are rare plants that have been found in the Intervale.

Common Fish and Wildlife

Mammals Beaver, mink, muskrat, gray squirrel, raccoon and red fox can be found in the Intervale.

Birds This WMA provides a good birding opportunity close to an urban environment. Black and wood ducks, mallards and blue-winged teal are among the ducks that may be seen. Canada geese, American and least bitterns, herons and soras also occur.

Reptiles and Amphibians Salamanders that might be found in the Intervale are newts and northern two-lined salamanders. Frog species include pickerel and northern leopard frogs. Snapping and northern map turtles are possible, as well as brown, northern water and eastern ribbon snakes.

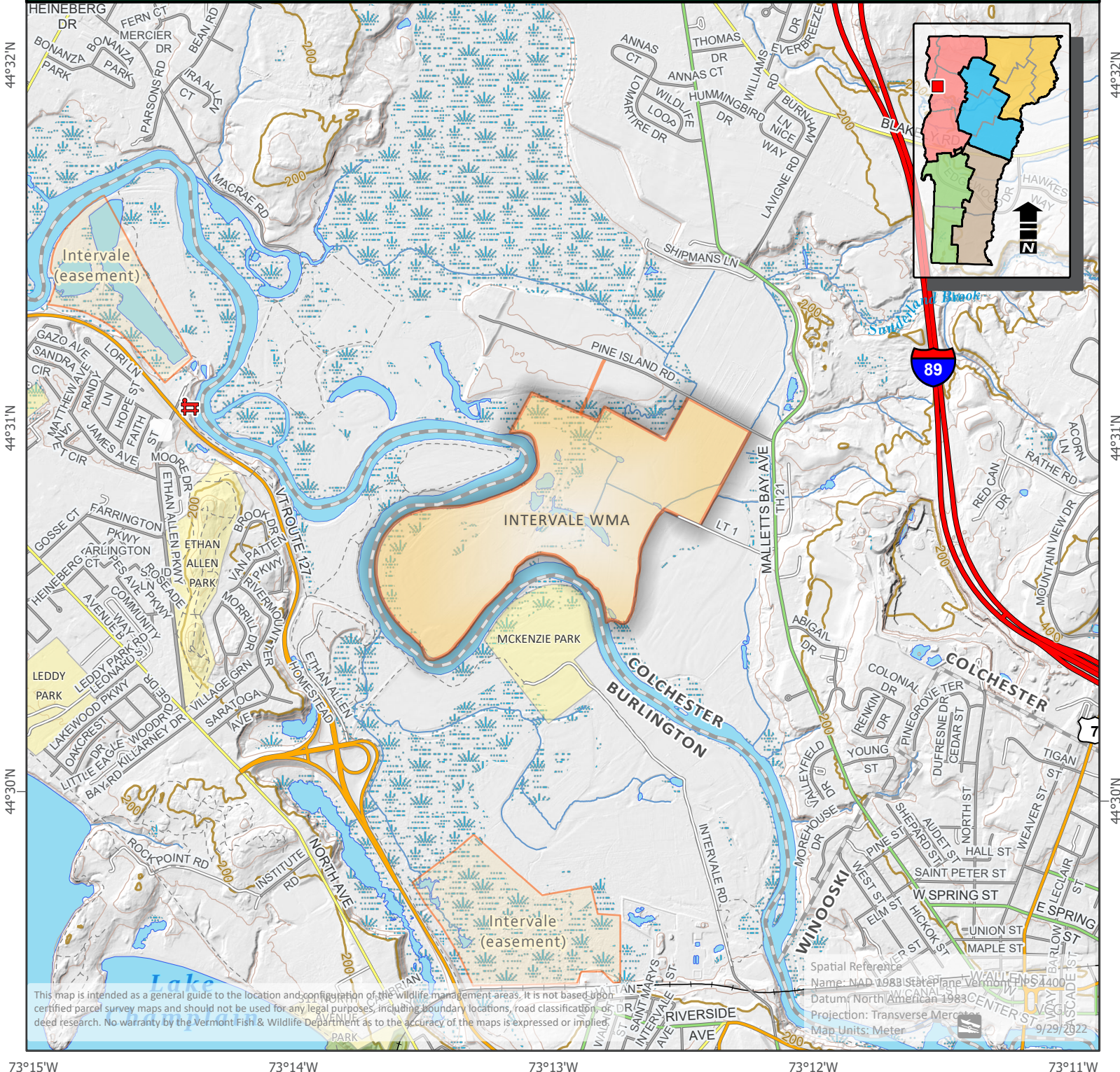
Fish The Howe Farm unit borders the Winooski River. Warmwater fish that may be found in the Winooski River include large and smallmouth bass, perch, walleye and northern pike. Some of the old oxbows on the property may hold bass, perch and panfish.

Intervale WMA is open to regulated, trapping, fishing, hiking and wildlife viewing.



Vermont Fish & Wildlife Department

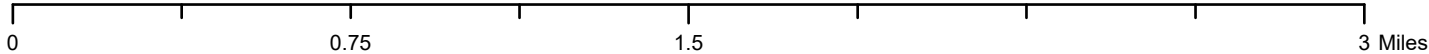
Intervale Wildlife Management Area



This map is intended as a general guide to the location and configuration of the wildlife management areas. It is not based upon certified parcel survey maps and should not be used for any legal purposes, including boundary locations, road classification, or deed research. No warranty by the Vermont Fish & Wildlife Department as to the accuracy of the maps is expressed or implied.

Spatial Reference Name: NAD 1983 StatePlane Vermont FIPS 4400 Datum: North American 1983 Projection: Transverse Mercator Map Units: Meter

73°15'W 73°14'W 73°13'W 73°12'W 73°11'W



Intervale WMA
Map Number: 42

<ul style="list-style-type: none"> Parking Boat Ramp Cartop Access Park Office Shooting Range Wildlife Viewing Area Campground Vista 	<ul style="list-style-type: none"> Fishing Access Visitor Information Gate Rail Lines Trails Town Boundary Wildlife Management Area WMA Hunting Rights Only Refuge (no public access) Special hunting/trapping restrictions Streambank Management Area Controlled Hunting Area 	<ul style="list-style-type: none"> Federal Land State Land Town Land
----------------------------------------------------------------------------------------------------------------------------------------------------------------------------------------------------------------------------	--------------------------------------------------------------------------------------------------------------------------------------------------------------------------------------------------------------------------------------------------------------------------------------------------------------------------------------------------------------------------------------------------------------	----------------------------------------------------------------------------------------------------------